

prophete

User manual Bicycle computer (7552)



About This Manual

- Read this manual carefully before first use to become familiar with the product and avoid misuse that could lead to damage or accidents. Pay special attention to safety and hazard warnings.
- Keep this manual and pass it on if you sell or give away the product.
- The latest version of this manual is available for download on our website.

General Safety Instructions

RISK OF SHORT CIRCUIT, FIRE, AND EXPLOSION!

- This product contains a battery. Never throw it into fire, immerse it in liquids, short-circuit it, or expose it to high temperatures or extremely low air pressure.
- If you notice smoke, strange noises, smells, or heat, stop using the product immediately. Do not use it if it is visibly damaged or defective.
- Only use the original battery supplied or batteries of the same type.
- If you suspect a child or pet has swallowed a battery, seek medical attention immediately. Swallowing can cause severe internal burns or be fatal within 2 hours.
- Do not make any changes to the product.
- This product can be used by children aged 8 and above and by persons with reduced physical, sensory, or mental capabilities if supervised or instructed on safe use.

Package Contents



- Bicycle Computer
- Mounting Shoe with Pad and Sensor
- Spoke Magnet
- CR 2016 Battery (3V)
- Cable Ties

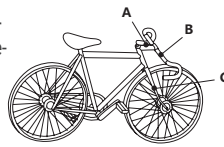
Inserting the Battery

The battery cover on the underside of the computer can be removed using a flat-head screwdriver or a coin. Insert a CR2016 battery with the positive terminal (+) facing the cover, then lock it in place.

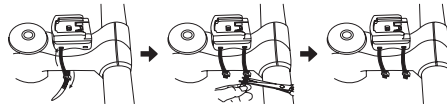


Installation

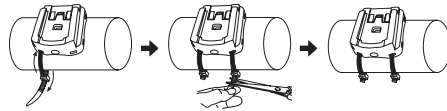
You can install the computer on the stem or on the handlebar (Option A/B):



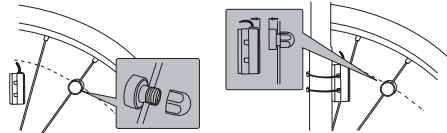
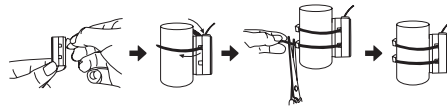
A STEM MOUNT



B HANDLEBAR MOUNT



C SENSOR AND SPOKE MAGNET MOUNTING

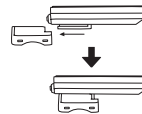


Ensure that the distance between the magnet and the sensor is no more than 5 mm.

Route the sensor cable along the fork leg and secure it using the cable ties. Ensure that the cable does not interfere with the movement of the front wheel.

INSTALLING THE COMPUTER

Attach the computer to the mounting shoe (see figure). To verify speed measurement and sensor alignment, spin the front wheel while the computer is switched on and fully configured. Adjust the position of the sensor and magnet if no signal – or only a weak signal – is received.



Settings

When the battery is inserted into the computer or the computer is re-initialized, the settings menu launches.

In the settings, use the MODE button ① to select the desired value or option, and confirm with the SET button ②.



SETTING	
LANGUAGE	German / English / French
UNIT	KM (km/h) / MIL (mph)
SET WS	Wheel circumference (in mm)
SETODO	Total odometer reading
SERVICE	Maintenance interval (in km / miles)
SET-KG-LB	Weight unit setting (kg/lb) + Rider weight
CLOCK	Time (hh:mm)
YEAR	Current year (yyyy)
MONTH	Current month (mm)
DAY	Current day (dd)
L	Display Backlight (LT1 / LT2) LT1 = Time-controlled (ON) START = Backlight start time END = Backlight end time LT2 = Manual

CALCULATE WHEEL CIRCUMFERENCE

Wheel Diameter (mm) × 3.14 = Wheel Circumference (mm)

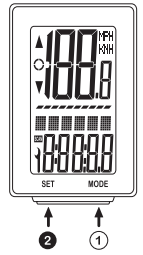


Example: Wheel diameter 686 mm
Calculation: 686 × 3.14 = 2154.04
Enter into computer: 2154

Operation / Display

Your current speed is displayed in the upper section of the screen while riding. The two arrows ↑ indicate whether you are currently traveling faster or slower than your average speed.

Press the MODE button ① to select a mode. Press and hold the SET button ② for 2 seconds to reset ride data or adjust settings. (Standard + Expert)



MODE (STANDARD)		SET-BUTTON ② (2 SEC)
CLOCK	Time	Settings Time and Backlight
TRIP	Distance/Trip Odometer	RESET
RIDETM	Riding Time	RESET
AVGSPD	Average Speed	RESET
MXSPD	Maximum Speed	RESET
ODO	Total Odometer	Settings Menu
TEMP °C	Temperature	Setting (°C/°F)


ADD/REMOVE MODES

You can add the modes listed below to—or remove them from—your active modes.

To do this, press the MODE button ① for 5 seconds, then toggle the desired mode ON or OFF using the MODE button ①. Finally, confirm your selection by pressing the SET button ②.

MODE (EXPERT)		SET-BUTTON ② (2 SEC)
CLOCK	Time	Time and Backlight Settings
STW	Stopwatch	RESET Start = SET Button
RIDETM	Riding Time	RESET
AVGSPD	Average Speed	RESET
MAXSPD	Maximum Speed	RESET
ODO	Total Distance	Settings Menu
TOTTIM	Total Riding Time	Set (Previous) Total Time
TEMP°C	Temperature	Set (°C/°F)
MNTEMP	Minimum Temperature	RESET
MXTEMP	Maximum Temperature	RESET
CAL	Current Calorie Consumption	RESET
KCAL	Total Calorie Consumption	RESET
FAT	Fat Burn	RESET
KM +	Target Distance	Set + / - KM - = Countdown Function
TIME +	Target Time	Set + / - TIME - = Countdown Function
CO2	CO2 Savings	Set CO2 Emission Coefficient
PLAN	Remaining Time Display	Set Planned Distance (km)
SCAN	Automatic Mode Switching	

SCAN MODE

With SCAN mode () activated and selected, the display automatically switches every 2 seconds:

Distance » Riding Time » Average Speed

PLAN MODE

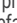
Once a distance has been preset, the computer continuously calculates the remaining travel time by dividing the remaining distance by the average speed; a recalculation is performed upon completion of the route. The data is updated every 3 seconds.

Additionally, the status is visualized by 10 bars on the display: each filled bar represents one-tenth of the total distance covered.

CO2 SAVINGS MODE


Calculation Method:

$CO_2 \text{ Savings} = \text{Driving Distance} \times CO_2 \text{ Emission Coefficient}$
(based on a motor vehicle with a 1.6 L engine displacement) per kilometer

The CO₂ emission coefficient can be adjusted by pressing the SET button  for more than 2 seconds; the default value is 159.


The CO₂ savings data is synchronized with the driving distance data. Consequently, this data is reset simultaneously with the resetting of the driving distance data.

MAINTENANCE REMINDER

The maintenance icon  reminds you to perform maintenance on your bicycle after a predefined riding distance has been covered. It deactivates once you have reset the maintenance distance.

BACKLIGHTING

LT1 (Timed): The backlight illuminates for 2 seconds whenever a button is pressed in any mode within the specified time period.

LT2 (Manual): Press and hold the MODE button  for 3 seconds to switch the backlight on or off.

AUTO-OFF FUNCTION

If no signal is received for 5 minutes, the computer enters sleep mode. (Reactivate by signal or by pressing a button.)

RESTART COMPUTER INITIALIZATION

To do this, press and hold the MODE  and SET  buttons for 5 seconds.

Care and Storage Instructions

Keep the product clean to ensure safe and effective use. You may clean the product's surface by hand using a damp cloth. Use only solvent-free, non-corrosive cleaning agents.

Store the product in a dry place. The storage temperature must remain within the permissible storage temperature range.

Theft Prevention

To prevent theft, we recommend that you do not leave the computer unattended in public places and that you take it with you.

Troubleshooting

ERRORS	PROBLEM/SOLUTION
NO OR INCORRECT SPEED/VALUES	Incorrect magnet/sensor alignment or spacing
	Incorrect wheel size entry Battery empty/replace
	Battery empty/replace
SLOW DISPLAY RESPONSE	Outside the permissible operating temperature range
NO OR FAINT DISPLAY OUTPUT	Poor battery contact or battery empty
BLACK DISPLAY	Temperature too high
IRREGULAR CHARACTERS	Remove and reinsert battery (wait 10 seconds)

Language Table

DE	EN	FR
DEUT	ENGL	FRANC
SET KM	SET KM	SET KM
RDRGRS	SET WS	DIMROU
SETGKM	SETODO	SETKMT
SERVIC	SERVIC	SERVIC
SET-KG	SET-KG	SET-KG
SET-LB	SET-LB	SET-LB
UHR	CLOCK	HEURE
JAHR	YEAR	ANNEE
MONAT	MONTH	MOIS
TAG	DAY	JOUR
LT1LT2	LT1LT2	LT1LT2
EIN AUS	ON OFF	MAR ARR
START	START	START
END	END	END
EXPERT	EXPERT	EXPERT
RESET	RESET	RESET
ALLES RESET	ALL RESET	TOUT RESET
STPUHR	STW	CHRONO
TAGKM	TRIP	DISTJ
F-ZEIT	RIDETM	T.PARC
DU-KMH	AVGSPD	VITMOY
MAXKMH	MAXSPD	VITMAX
GES-KM	ODO	DSTTOT
G-ZEIT	TOTTIM	TEMTOT
TEMP°C	TEMP°C	TEMP°C
MNTEMP	MNTEMP	MNTEMP
MXTEMP	MXTEMP	MXTEMP
CAL	CAL	CAL
KCAL	KCAL	KCAL
FETTV	FAT	GRAS
KM+	KM+	KM+
ZEIT+	TIME+	TEMPS+
CO 2	CO 2	CO 2
PLAN	PLAN	PLAN

Tire Circumference Chart

Overview of Common Tire Circumferences (Rolling Circumference):

INCHES	ETRTO (WIDTH-Ø)	CIRCUMFERENCE (MM)
20"	40-406	~1540
20"	54-406	~1620
24"	47-507	~1900
26"	37-559	~2030
26"	47-559	~2050
26"	54-559	~2100
27,5"	54-584	~2195
27,5"	60-584	~2240
28"	23-622	~2125
28"	25-622	~2135
28"	28-622	~2150
28"	32-622	~2170
28"	37-622	~2200
28"	40-622	~2220
28"	47-622	~2250
29"	54-622	~2310
29"	60-622	~2340

The values may vary depending on the tire type, tire pressure, and tread pattern.

Technical data

MODEL	Prophete Bicycle Computer (7552)
BATTERY	CR2016 (3V)
PERMISSIBLE OPERATING TEMPERATURE	0~50 °C (32~122°F)
PERMISSIBLE STORAGE TEMPERATURE	-10~60 °C (14~140°F)

Warranty Information

We provide the statutory warranty coverage for this item. This coverage begins on the date of purchase (as indicated on the receipt or proof of purchase). During the warranty period, defective products may be claimed with the seller or at the specified service address. During this period, all defects attributable to material or functional faults will be repaired free of charge. Excluded from this coverage are normal wear and tear, as well as damage resulting from accidents, improper use, drops/impacts, or modifications made to the product. The repair or replacement of the product does not initiate a new warranty period.

Contact/Service Address

Prophete In Moving GmbH
Lindenstr. 50 | D-33378 Rheda-Wiedenbrück

www.prophete.de | info@prophete.de

Disposal Instructions



Consumers are legally obliged to dispose of electrical and electronic equipment separately from household waste at the end of its service life. This ensures environmentally friendly and resource-conserving recycling. You may drop off

such devices at collection points operated by public waste management authorities or at collection points established by manufacturers or distributors in accordance with the German Electrical and Electronic Equipment Act (ElektroG). The drop-off of old devices is free of charge. Consumers also have the option to drop off an old device free of charge at a distributor subject to take-back obligations, provided they purchase a new, equivalent device with substantially the same function. Before dropping off the device, please remove the battery and deposit it at a designated disposal facility.

Please dispose of the packaging in an environmentally friendly manner, separating materials by type, using the provided collection bins. Information regarding disposal options can be obtained from your local municipal or city administration.

EC Declaration of Conformity



The EC Declaration of Conformity can be downloaded at www.prophete.de.